

General Description

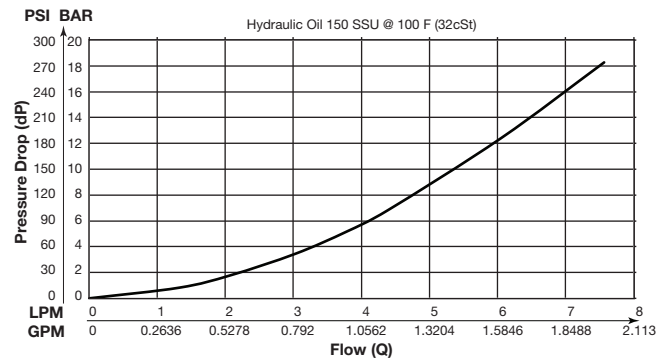
Cartridge Style Sense Check Valve.
 For additional information see Technical Tips on pages CV2-CV3.

Features

- Rapid response to load direction changes
- Hardened precision parts for durability
- **Insert style design for location within manifolds under SAE-6 or larger port**

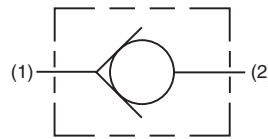
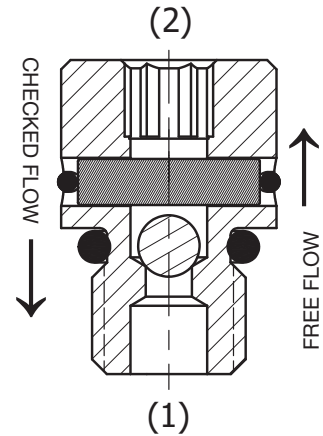
Performance Curve

Pressure Drop vs. Flow

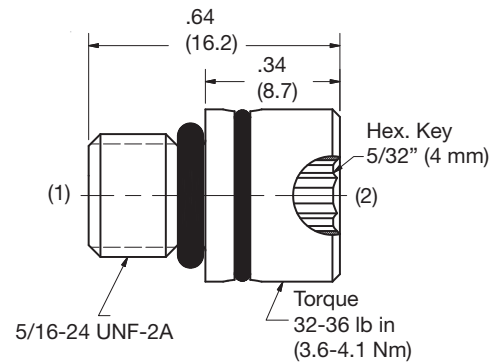


Specifications

Rated Flow	3.8 LPM (1 GPM)
Maximum Inlet Pressure	350 Bar (5000 PSI)
Leakage at 150 SSU (32 cSt)	15 ml/min.
Cartridge Material	Steel operating parts hardened steel ball.
Operating Temp. Range/Seals	-26°C to +204°C (Fluorocarbon) (-15°F to +400°F)
Fluid Compatibility/Viscosity	Mineral-based or synthetic with lubricating properties at viscosities of 45 to 2000 SSU (6 to 420 cSt)
Filtration	ISO-4406 18/16/13, SAE Class 4
Approx. Weight	0.02 kg (0.045 lbs.)



Dimensions Millimeters (Inches)



Ordering Information

CVH021

Size 02 Sense Check Valve

CV Check Valves
SH Shuttle Valves
LM Load/Motor Controls
FC Flow Controls
PC Pressure Controls
LE Logic Elements
DC Directional Controls
SV Solenoid Valves
PV Proportional Valves
CE Coils & Electronics
BC Bodies & Cavities
TD Technical Data